

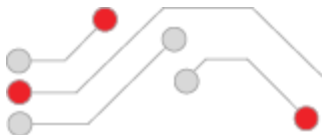


Computer Hardware Design



RECORD YOUR SALES AND TRACK REVENUE WITH CHD 6800 MINIPOS SYSTEM

CHD 6800 MINIPOS, THE COMPACT ALL-IN-ONE POINT-OF-SALE SYSTEM IS EASY TO SETUP AND INTUITIVE TO USE. JUST SWITCH IT ON AND YOU ARE READY TO KICK START THE SALES! LIFE IS REALLY THAT SIMPLE!



Based on Android™



RETAIL

- General retail stores
- Supermarkets
- Convenience stores
- Open-air sales outlets
- Transportation
- etc.

F&B

- Cafes
- Restaurants
- Fast food & bistros
- Food courts
- Pubs
- etc.

CHD 6800



THE RIGHT TOOL FOR YOUR BUSINESS!

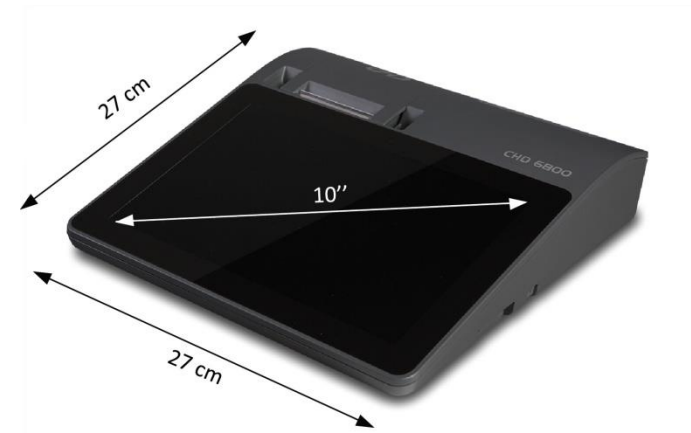
True ALL-IN-ONE

- Built-in display
- Built-in customer screen
- Built-in printer



European style design

- Small footprint
- Compact
- Lightweight



SMALLER DEVICE – MORE SPACE FOR PRODUCTS!

10" crystal clear operator display

- Capacitive touch LCD
- Tempered glass
- Sun light readable
- Spill proof



58 mm thermal printer

- Fast print speed: up to 100 mm/s
- One click easy paper roll change
- Automatic receipt cutter



240 x 48 dot customer display



ALL TOOLS FOR YOUR SALES IN ONE DEVICE!

4 x USB + 2 x RS232 ports



- Connect various peripherals (barcode scanners, scales, pin-pads, additional printers, NFC readers)

Wi-Fi

- Use own wireless network infrastructure for data transfer
- Use as access point



Bluetooth

- Connect BT devices



3G/4G

- Use CHD 6800 anywhere



LAN 1 Gigabit Ethernet



HDMI for second screen

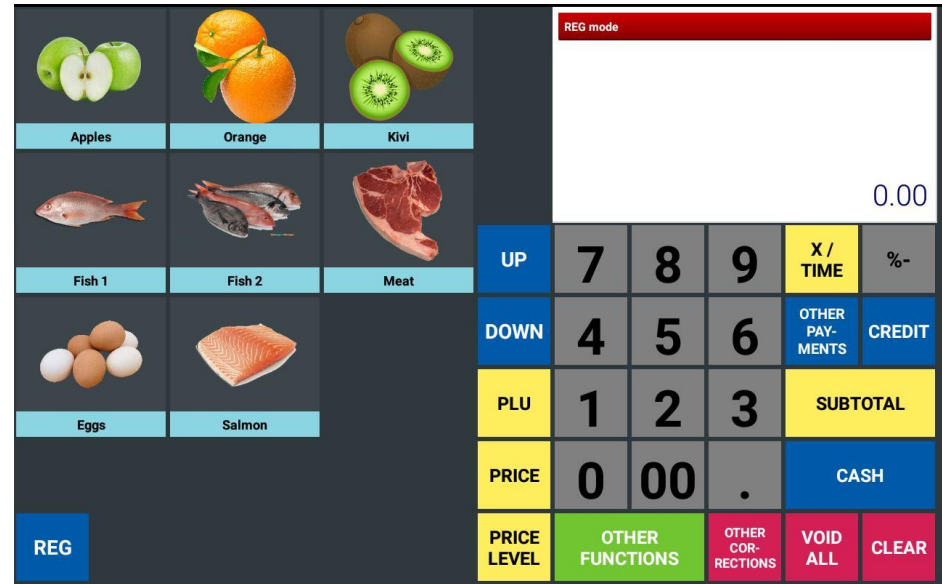


Cash drawer



All features for RETAIL

- Common standard ECR features
- 50000 PLUs
- 10000 departments
- Discounts/modifiers
- Barcode scanner & Scale support
- Integrated payment terminal link
- Colorful touchscreen layouts
- Electronic Journal



Ideal solution for

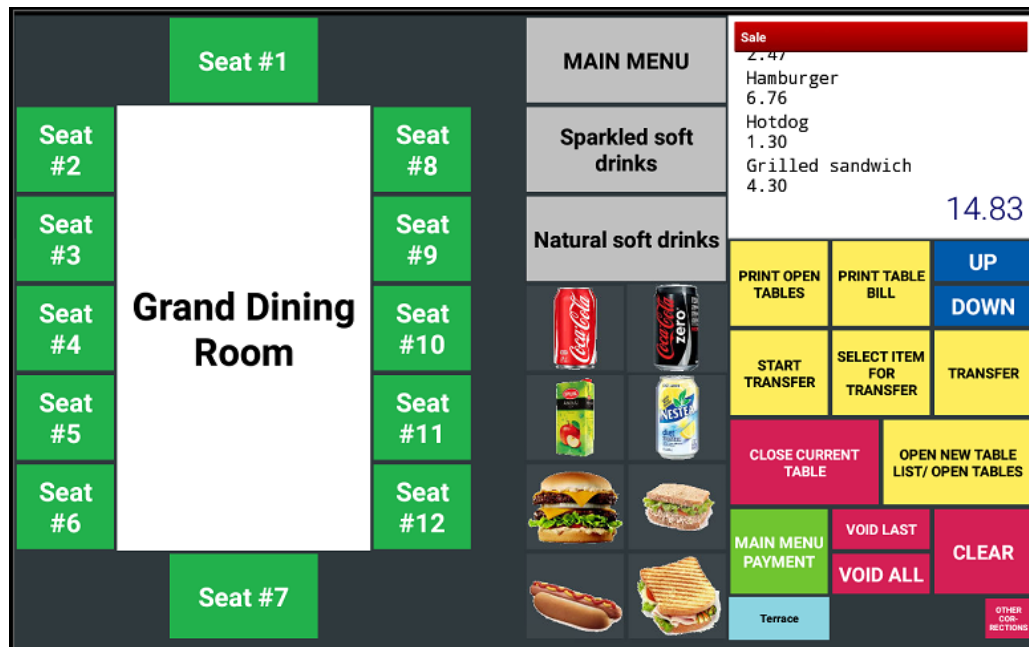
- Small to medium retail
- Open air outlets
- General retail stores



A TOOL READY TO WORK!

All features for F&B

- Common standard ECR features
- HORECA functionality
- 9999 tables
- 99 clerks (Dallas key or password)
- 4 kitchen printers (RS232/Ethernet)
- «Order number» feature
- Design Your own layouts



The screenshot shows a central table layout for 'Grand Dining Room' with 12 seats numbered #1 to #12. To the right is a main menu and a control panel. The menu includes:

- MAIN MENU**: Sale 2.47, Hamburger 6.76, Hotdog 1.30, Grilled sandwich 4.30. Total: 14.83
- Sparkled soft drinks**
- Natural soft drinks**

The control panel includes buttons for:

- PRINT OPEN TABLES, PRINT TABLE BILL, UP, DOWN
- START TRANSFER, SELECT ITEM FOR TRANSFER, TRANSFER
- CLOSE CURRENT TABLE, OPEN NEW TABLE LIST/ OPEN TABLES
- MAIN MENU PAYMENT, VOID LAST, VOID ALL, CLEAR
- Terrace, OTHER DISCOUNTS

Ideal solution for

- Small and medium restaurants
- Fast food courts
- Bars, cafes, pubs



A TOOL READY TO WORK!

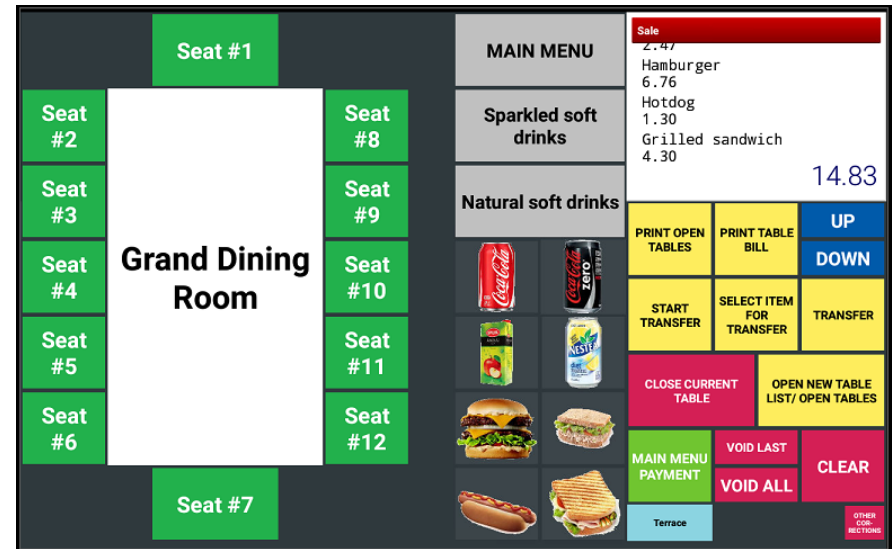
Easy to set up and use

Create and use colorfull easy to read layouts



The retail layout interface features a top navigation bar with categories: EXPRESS MENU (green), DISCOUNT OFFERS (red), BAKERY (orange), MAIN MENU (grey), SOFT BEVERAGES (yellow), ALCOHOLIC BEVERAGES (cyan), and OTHER FUNCTIONS (green). Below the navigation bar is a grid of product images for various items. A numeric keypad is located in the center, with buttons for digits 0-9, X/TIME, %- (tax), UP, DOWN, PLU, PRICE, SUBTOTAL, CASH, and CLEAR. At the bottom, there are departmental keys: DEP - Other alco-beverages, DEP - Other soft drinks, DEP - Other bakery, PRICE LEVEL, OTHER COR-RECTIONS, VOID ALL, EC, and CLEAR. A status bar at the top right shows 'REG mode' and a total amount of 0.00.

- Retail layout with commonly used items;
- Department keys and submenus for easy operation;
- Functional keys for transaction operations.



The hospitality layout interface is designed for a dining room. It features a central area labeled 'Grand Dining Room' surrounded by seat numbers from #1 to #12. A 'MAIN MENU' is displayed on the right, including 'Sparkled soft drinks' and 'Natural soft drinks' with corresponding product images. A 'Sale' section shows a list of items: Hamburger (2.47), Hotdog (6.76), and Grilled sandwich (1.30), with a total of 14.83. Below the menu are several functional buttons: PRINT OPEN TABLES, PRINT TABLE BILL, UP, DOWN, START TRANSFER, SELECT ITEM FOR TRANSFER, TRANSFER, CLOSE CURRENT TABLE, OPEN NEW TABLE LIST/ OPEN TABLES, MAIN MENU PAYMENT, VOID LAST, VOID ALL, CLEAR, and Terrace. A status bar at the top right shows 'Sale' and a total amount of 14.83.

- Hospitality layout with seat allocation;
- Layout also contains quick access items and departments;
- Function keys to manage table operations.

A TOOL READY TO WORK!

Kitchen printers

System can have up to 4 kitchen printers
Connect via Ethernet or RS232



Usage

- Create a PLU group
- Assign a printer to a group
- Add PLUs to designated group



Be on top of your business

Get all sales data printed instantly on receipts.



Daily financial	Period financial	X mode	
Departments	Department periodical	In-drawer	Report list 3
PLU	PLU periodical	Hourly	Report list 4
Clerk	Clerk periodical	Report list 1	Report list 5
Customer	Customer periodical	Report list 2	Status
REG	PRINT RECEIPT BY NUMBER #	PRINT RECEIPT BY DATE/TIME	CLEAR

Usage

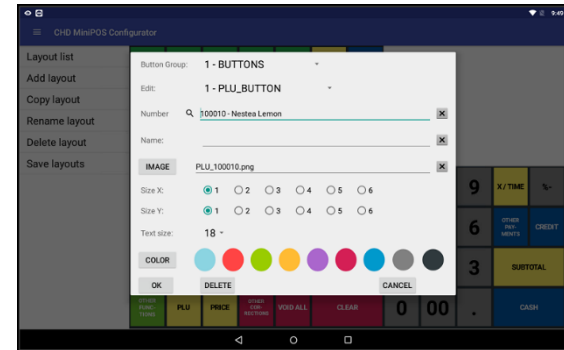
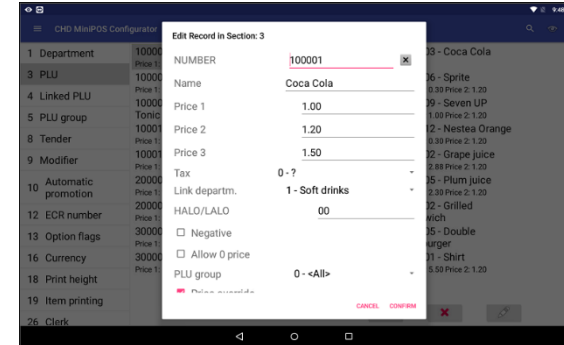
- Print all reports from device
- Read reports from PC based software
- Electronic Journal as backup

A TOOL READY TO WORK!

Easy to manage your CHD6800 miniPOS

Built in configuration utility allows to configure all aspects of cash register from screen of device:

- Items
- Departments
- Payments
- Discounts
- Users and permissions
- Printing options
- Functional settings
- Keyboard layout editor



Easy to use

- Drag&drop approach for keyboard layout editor
- Easy to search and modify items
- Import/export settings for backup
- Easy to learn and operate

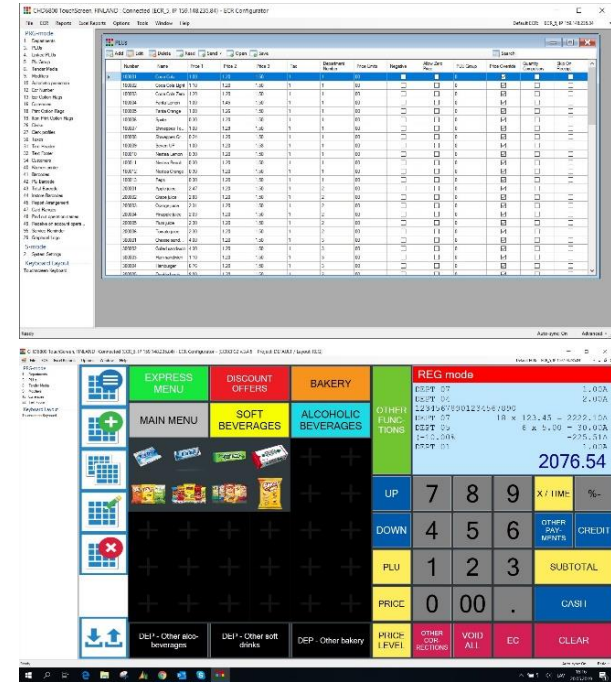


A TOOL READY TO WORK!

PC based configuration utility

A PC based configuration utility allows to configure:

- Items
- Departments
- Payments
- Discounts
- Users and permissions
- Printing options
- Functional settings
- Keyboard layout editor



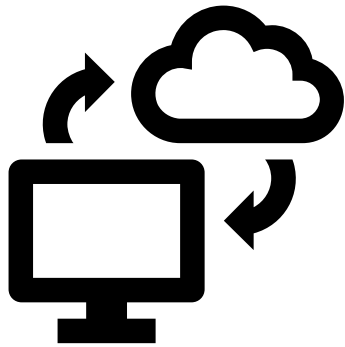
Easy to use

- Connect to device via Ethernet or RS232
- Drag&drop approach for keyboard layout editor
- Import/export settings for backup

A TOOL READY TO WORK!

Support one call away

Instant and quick problem solving to provide best customer service



Support format

- Call or email support from our client manager
- Option to connect to any machine with Teamviewer




A TOOL READY TO WORK!

Cloud based Back-office system

- Edit items/prices/settings online
- Gather actual sales reports
- High-end features and analytic equipped environment
- Manage multiple cash registers in multiple locations
- Subscription based model




Find product...

HOME

PRODUCTS

JOURNALS <

PURCHASE ORDERS

SALES INVOICES <

E-COMMERCE ORDERS

VENDORS

CUSTOMERS

PROMOTIONS

REPORTS <

RETAIL SETUP <

RETAIL LABELS

RETAIL WEBPOS <

ADMINISTRATION <

CLIENT PROFILE

Home / Products / new

New product

* Product No.:

* Product description:

Notes:

* Standard price incl. VAT: Standard price excl. VAT:

GM: - % Profit: - GBP

* Unit of measure: * Unit cost:

Product category:

* VAT:

Active on POS

A TOOL READY TO WORK!

CPU	Cortex-A9 Dual Core Life @1GHz iMX6
CPU Maker	Freescall
RAM	1 GB (expandable to 2 GB)
Storage	8 GB on eMMC (expandable to 64 GB)
Display	IPS 10.1" 1280 x 800 Landscape
Touch	capacitive, multi-touch, 10 points
Display design	True Flat
Graphics Chipset	GC2000
Wi-Fi	802.11 b/g/n
Bluetooth	4.0
Printer	integrated 58 mm thermal with Auto Cutter
USB Host	3 (2 USB on back panel, 1 USB at side)
USB OTG	1 (at side)
RS-232 external	2 (with +5V power supply) at back panel
Cash drawer port	1 (RJ11) 9V
SD slot	yes (supports up to 32 GB SD cards)
LAN	Gigabit Ethernet
HDMI	Full HD 1920x1080; supports dual display mode
Audio	line in/out
VESA mount	Standard VESA 100
Operating system	Android™ 5.1
Weight	1.8 kg
Size	270 (W) x 270 (L) x 80 (H) mm

- ✓ Retail hardened hardware
- ✓ Automotive grade components
- ✓ Life expectancy: 7+ years
- ✓ Designed for 24/7



Options

Printer	factory only	58 mm printer with Manual
Customer		cutter
Display	dealer option	Integrated 240x48 dot
Operation		display
battery	dealer option	6000 mAh
i-button	dealer option	
NFC (internal)	factory only	
Cash drawer	dealer option	
3G/4G (internal)	factory only	
mSATA	factory only	

Rubber cover for outdoor use





Computer Hardware Design

CHD Asia

CHD ASIA PTE. LTD.

3791 Jalan Bukit Merah
#03-05, e-Centre, Singapore,
159471

Phone: +65 6255 9910

Fax: +65 6255 2259

info@chd.sg

www.chd.sg



CHD Europe

CHD EUROPE SIA

Dzelzavas 120i, Riga,
LV-1021, Latvia

Phone: +371 6780 2812

Fax: +371 6780 2822

info@chdeurope.com

www.chdeurope.com



Android is a trademark of Google Inc.